

**AIRODISTM**

The screenshot displays the Air Quality Data Manager software interface. The main window shows a 'Station List' with columns for ID, Name, and various data points. Below this is a 'Graph Definition' dialog box with tabs for Properties, Data Set, Level Markers, and Preview. The 'Properties' tab is active, showing options for 'Linear', 'Distribution', and 'Polar' graph types. The 'Preview' tab shows a line graph of 'Concentration Parts (ppb)' over time, with a legend indicating 'NOx (ppb)'.

The complete data management solution

Airodis is an environmental data management software package that automates the process of retrieving data from multiple data loggers, allowing you to validate data and generate a wide range of reports.

It allows you to easily manage your valuable data and maximise your productivity while ensuring accuracy and traceability.

Utilising .Net technology and operating on Windows XP/7, Airodis provides you with an easy to use multilingual data management package.

Data collection

Airodis streamlines the data collection process by automatically or manually downloading data from multiple loggers and saving it into an SQL Server database.

Data can be collected from a wide variety of loggers over multiple communication media. CSV file import is also supported and communication scripts for non-supported data loggers can easily be produced.

Other benefits include:

- Download periods as frequent as 10 seconds.
- Database support for the MS SQL database supplied as standard with the SQL Server 2008 R2 Express database.
- Modem pools fully supported.
- Full automation of data collection process.

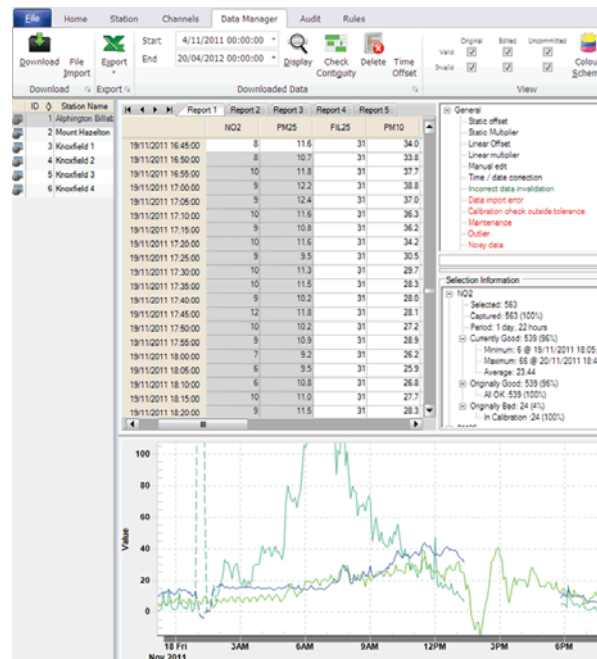


Communication media supported includes:

- RS232 and TCP/IP.
- 3G and dial up network.
- Radio network.

Data management

The data management function simplifies and streamlines the data assessment and review process. It provides you with a range of tools to quickly and easily examine and validate collected data.



Data is presented onscreen in a fully configurable table and in a zoomable dynamic graph. Data selected in the graph is also selected in the table and vice versa. This allows for blocks of data to be quickly examined and individual measurement peaks to be scrutinised.

A single common invalidation reason can then be assigned through a simple drag and drop function. This action can also include transformations of data such as offsets, multipliers or directly editing the value. Data can be reviewed, compared, recalculated, rescaled, inserted and manipulated quickly and easily.

Sophisticated yet simple

All changes to data require a reason to be entered for the change, this change will then tag the data as being edited and will automatically place an entry in the audit log.

The audit log can be viewed anytime and displays the history of every single change, why it changed and who changed it. Changes can also be easily reversed. This ensures full traceability of your data.

- Data can be easily validated or invalidated with the click of a button.
- Data validation graph enabling easy selection of data.
- Graphical representation of data allows quick visual inspection for outliers and data errors.
- Drag and drop functionality.
- Configurable data validation reasons.
- Data in the data table can be highlighted depending on its status. ie calibration data, validated data etc
- Data can be imported with predefined “ranges” that data must be within or outside to be tagged as valid.
- Fully traceable auditing of data with audit log.
- Changes to data can be viewed in audit log.
- Multi-lingual support including Spanish, Chinese. Additional languages can be configured upon request.

Virtual stations

The virtual station function allows you to extract data channels from two or more data loggers and combine them within the data manager, making it simple to report on the same or different parameters from multiple locations.

Alarms

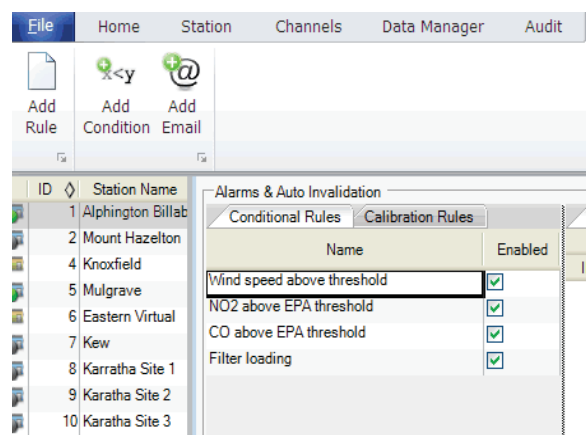
Airodis provides automatic alarm notifications via email when:

- Data is outside a user defined range.
- Pollutants are over exceedence levels.
- Specific weather conditions exist.
- An instrument or station is not working.

Airodis represents our 35 years experience in the development of software and technology, and our success in operating one of the world's largest networks of environmental monitoring systems.

Alarms can be configured based on data quality parameters such as:

- Out of tolerance concentration average
- Out of tolerance rolling average
- Out of tolerance span/zero calibration.



Multi-user

Airodis allows multiple users to simultaneously check data, create reports and monitor alarms using its SQL database.

Calculated channels

Calculated channels can be produced from existing channels to scale data and apply mathematic formulas.

There are a vast array of calculations which provide unlimited flexibility when generating reports from existing data.

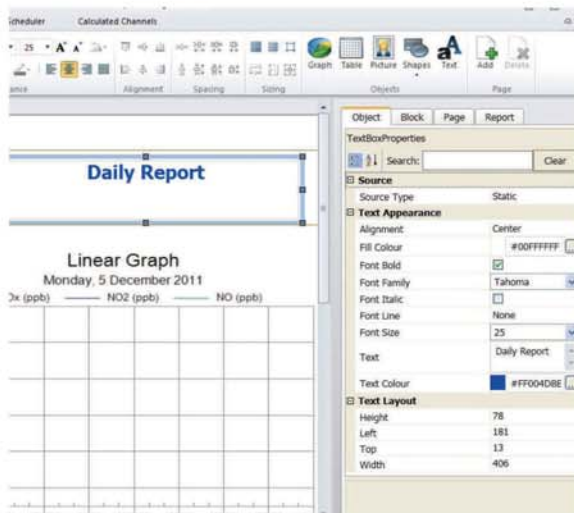
Reporting made easy

Reporting

Airodis simplifies the task of report generation by automatically capturing the necessary data from the SQL database and generating one or more user customised reports.

Reports are generated for a given period, at a predefined time without user interaction, providing flexibility to generate different reports to meet a variety of operational requirements.

Data can be presented in reports using tables, bar graphs, distribution graphs, frequency graphs, polar plots and/or wind roses. Text and images can also be inserted.



Advanced graphical reporting enables exceedences to be combined with a pollution index plot (data points plotted against defined threshold levels) or a map showing the physical location and direction of pollutants.

A wide variety of line and bar graph calculations are also available including averages, maximum, minimums, standard deviations, percentiles and many more.

Tabular objects can include a wide range of data calculations including maximum, minimums, averages, exceedence, vector sums and averages, standard deviations, capture percentages and many more.

Reports can be configured so that styles, colours and fonts can be customised. Graphs and tables are available for any user definable period including hourly, daily, weekly, monthly and yearly periods.

Report output formats include: MS Word and Excel, Adobe PDF, images (JPEG, TIFF, PNG, BMP, GIF, EMF), HTML, CSV and text.

This makes it perfect for automatically emailing a report to the user or another manager, outputting reports to a screen and sending a report via FTP to a web server for presentation on an internet site.

Visit the Airodis website for more information and examples of what Airodis can do for you.

www.airodis.com

Contact details:
PH: (877) 247-0403
FX: (401) 537-9166
Email: info@americanecotech.com
Web: www.AmericanEcotech.com

 **AMERICAN
ECOTECH**
World Class Air Monitoring Systems